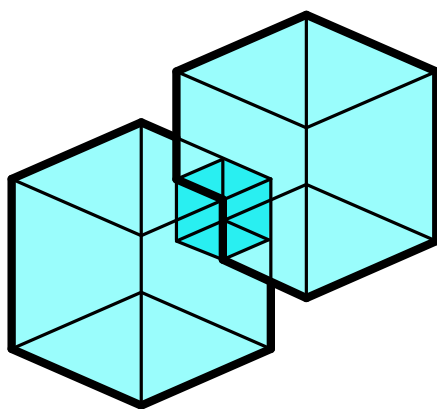




The Leverhulme Trust



# Topologic

## SOFTWARE INSTALLATION GUIDE

November 2019



TABLE OF CONTENTS

Installation ..... 5

Topologic and Dynamo ..... 8

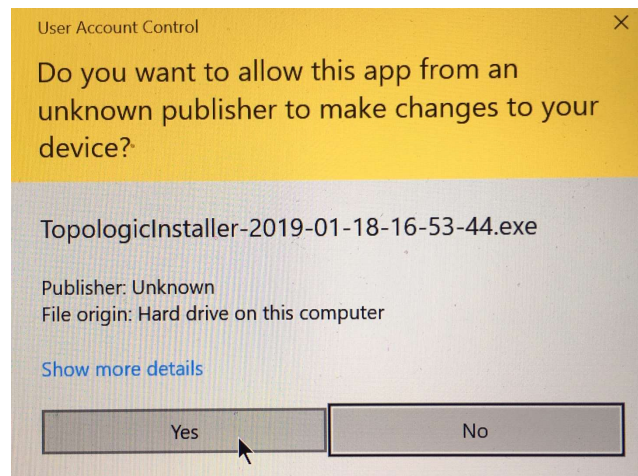
Troubleshooting ..... 9



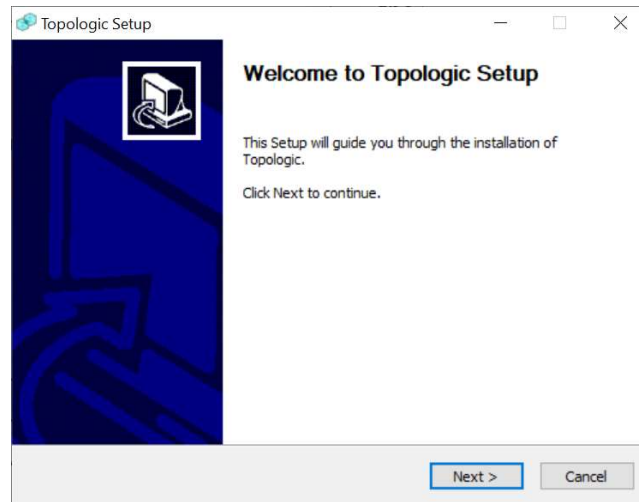
## Installation

You need Administrative privileges to install Topologic. Topologic is compatible with the Microsoft Windows operating system. We recommend Windows 10 OS. After downloading the Topologic installer file via the link or file provided to you, please follow the instructions on the screen to install Topologic and its associated components. Topologic will do its best to download the required third-party software such as OpenStudio and EnergyPlus. Before installation, make sure you do not have any copies of Dynamo open.

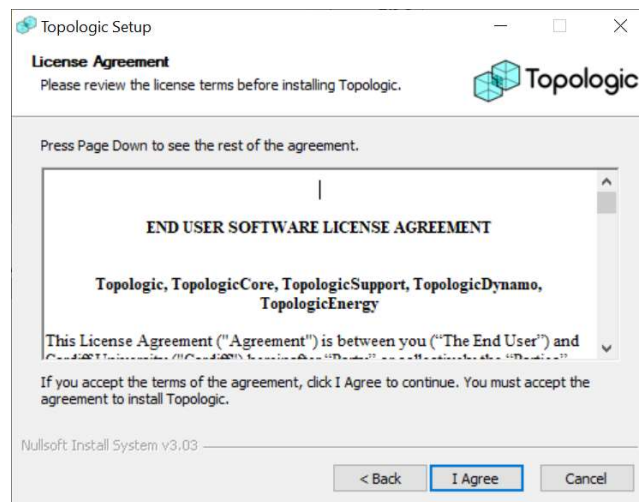
1. Locate then double click the Topologic Installer application. The name of the file might be followed with the date it was downloaded.
2. Windows may present a Window saying that it prevented the installer from running. There will be a “More Info..” link in that window. If you press that, you will be presented with the option to run the installer anyway.
3. Then the following window or similar may appear.



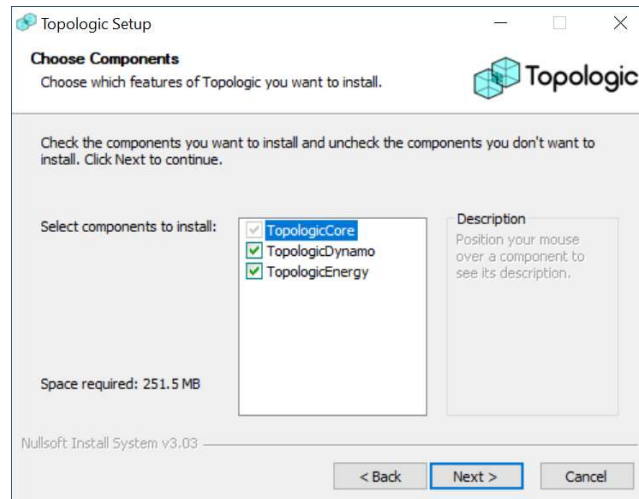
4. Click **Yes** to continue to install Topologic. The following window will appear.



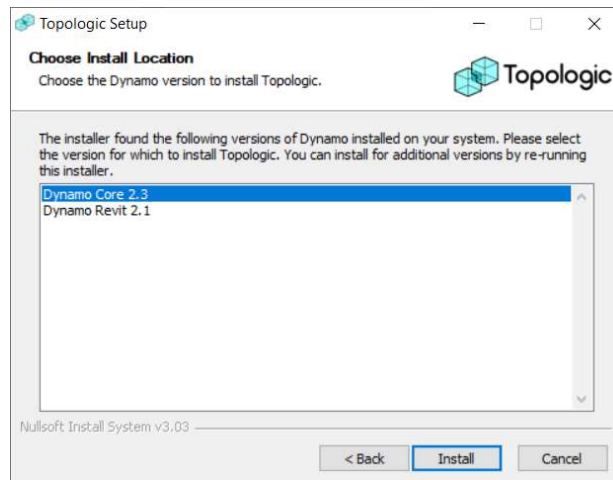
5. Click **Next >** to continue to install Topologic. The following window will appear.



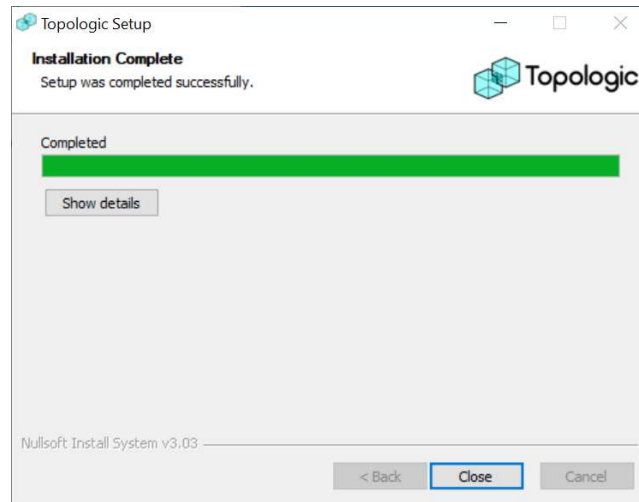
6. Read the END USER SOFTWARE LICENSE AGREEMENT carefully. If you agree with its terms and conditions, click **I Agree** to continue to install Topologic. The following window will appear.



7. Choose which components you wish to install. We recommend that you keep all components checked. Click **Next >** to continue to install Topologic. The following window will appear.



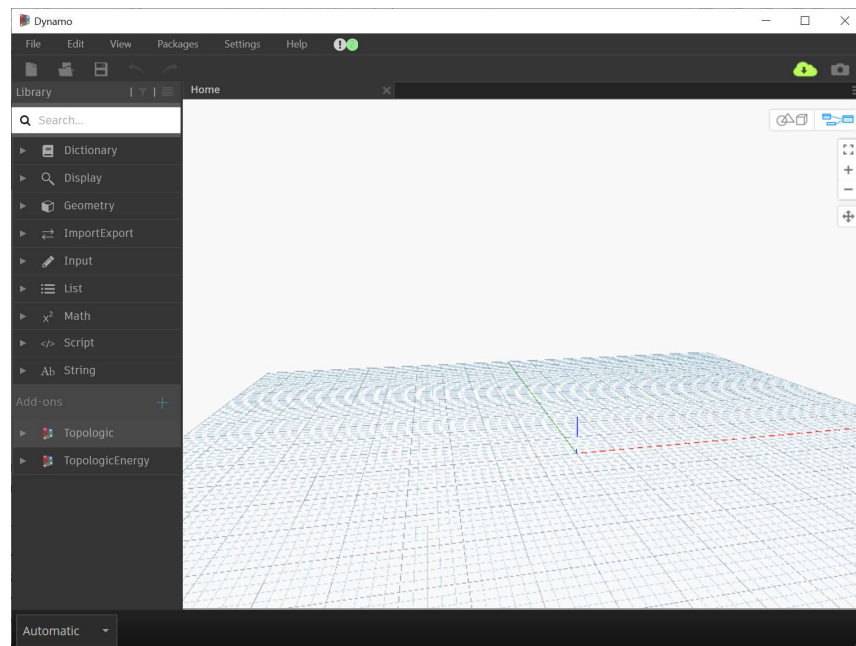
8. Choose for which version of Dynamo you wish to install Topologic. Click on Install to continue to install Topologic. It will then install all components. If you wish to install Topologic for multiple versions of Dynamo, please re-run the installer and choose a different Dynamo version at this step. If all goes well, this final window will appear.



9. Click **Close** to complete the installation of Topologic.

## Topologic and Dynamo

Topologic works within Dynamo. You can integrate workflows using nodes from Dynamo, Topologic, and other third-party packages. You should now see the Topologic and TopologicEnergy menus on the left.



Congratulations. You are now ready to use Topologic.



## Troubleshooting

If you encounter problems with installation, we recommend the following steps:

1. In Dynamo Go to the Settings Menu
2. Choose Manage Node and Package Paths...
3. Choose any listing for Topologic and press the “-” (minus sign) to remove it.
4. Repeat for the TopologicEnergy listing. When done click on Accept Changes
5. Quit Dynamo
6. Restart Dynamo and see if the menus return.
7. If the menus did not return, then de-install Dynamo:
  - a. Open the Windows Settings application
  - b. Search for “Add or Remove Programs”
  - c. Find all listings for Dynamo in the list of programs
  - d. Choose that listing and click on uninstall.
  - e. Delete the folder C:\\Program Files\\Dynamo
8. Re-start your Windows Machine.
9. Re-download Topologic v 0.8.3 from <http://topologic.app/software>



---

**The Leverhulme Trust**

---

This project is funded by a Leverhulme Trust Research Project Grant  
(Grant No. RPG-2016-016)

**CONTACT US**

Web: [topologic.app](http://topologic.app)

Email: [info@topologic.app](mailto:info@topologic.app)

Phone: +44 (0) 29 2087 5981

Welsh School of Architecture  
Cardiff University  
Cardiff CF10 3NB  
United Kingdom